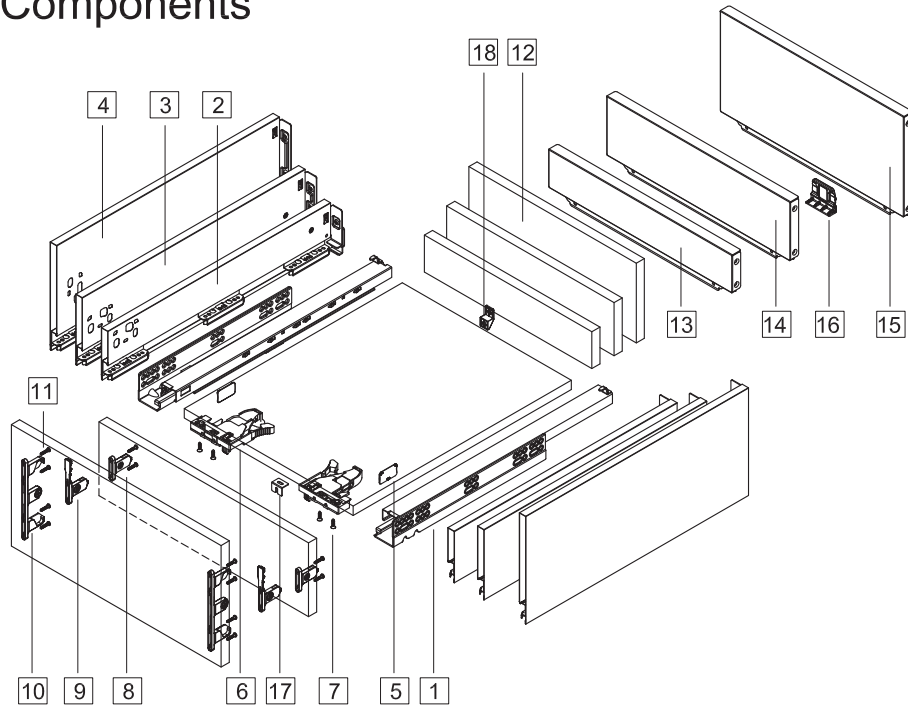


Components



1.Cabinet profiles: L/R	10.185 Front fixing-brackets	Nominal length	Internal drawer length	Min.installation length of drawer
2.89 Drawer profiles: L/R	11. Front fixing-brackets screw (Ø4x17)	270mm	244mm	275mm
3.121 Drawer profiles: L/R	12. Drawer back	300mm	274mm	305mm
4.185 Drawer profiles: L/R	13. Metal back height 89	350mm	324mm	355mm
5.Side cover plate	14. Metal back height 121	400mm	374mm	405mm
6.Locking brackets L/R	15. Metal back height 185	450mm	424mm	455mm
7.Locking brackets screw (Ø3.5x15)	16. Metal back fixed	500mm	474mm	505mm
8.89 Front fixing-brackets	17. Bottom fixing(for wide drawer)	550mm	524mm	555mm
9.121 Front fixing-brackets	18. Back fixing(for wide drawer)			

Drawer Back and Bottom Dimensions

Back

Type	89	121	185
H (mm)	59	91	155

Metal Back L=LW-42

KB≥800mm
Metal back fixed

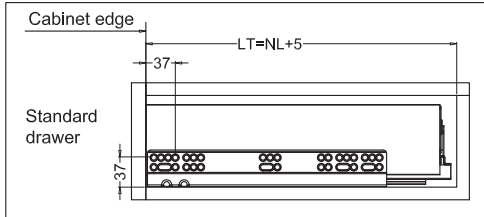
Drawer Bottom L=NL-20

270~400 450~550

**KB Cabinet width
LW Internal cabinet width
NL Nominal length**

Installation dimensions (mm)

Nominal slide length=NL Internal cabinet depth=LT

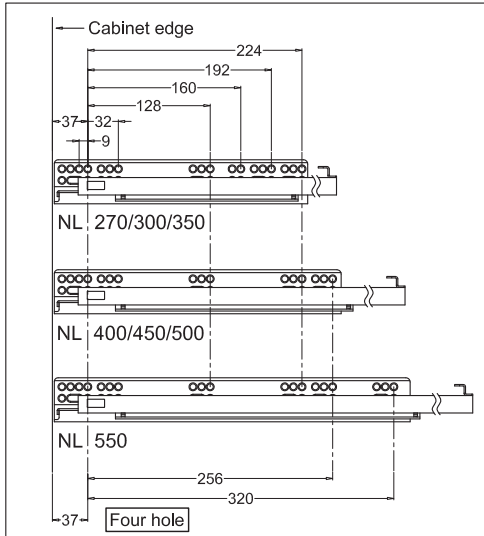


Drawer installation dimensions (mm)

89 121 Drawer front

185 Drawer front

Screw positions of the sides



Drawer installation dimensions (mm)

LW=Internal cabinet width

89

121

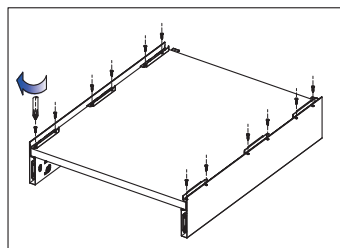
185

StrongMax slender metal drawer

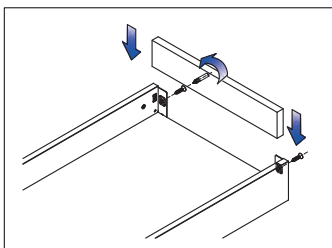
Assembly removal and adjustment



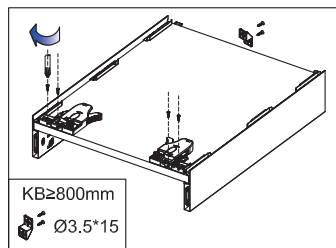
Drawer assembly



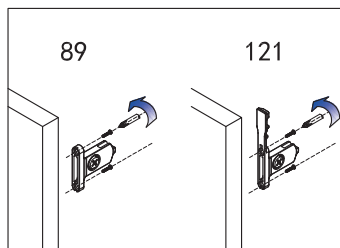
Bottom assembly



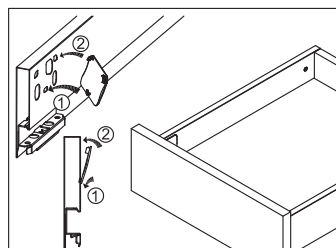
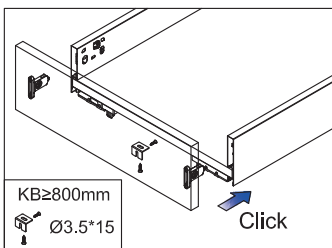
Back assembly



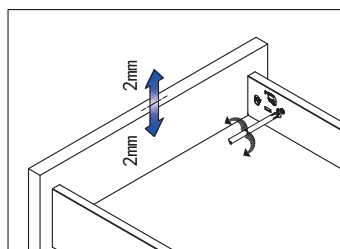
Locking Brackets assembly



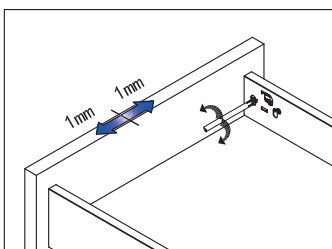
Front assembly



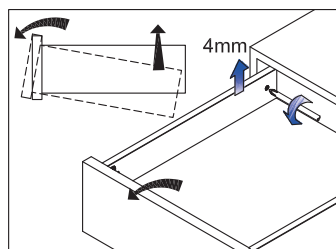
Adjustment



Up&down adjustment

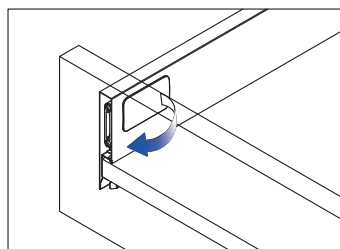


Left&right adjustment

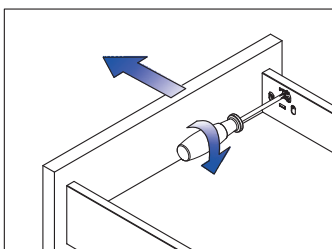


Front slope angle adjustment

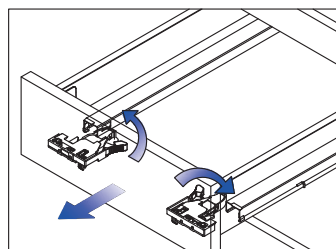
Removal



Tip up the cover and pull out



Removal drawer front



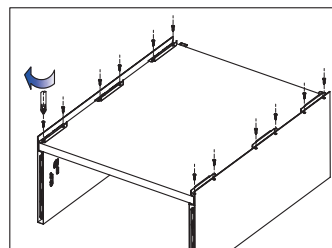
Removal drawer

StrongMax slender metal drawer

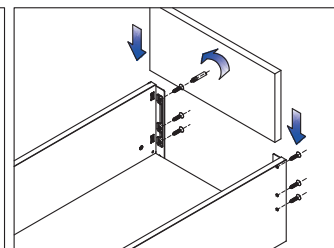
Assembly removal and adjustment



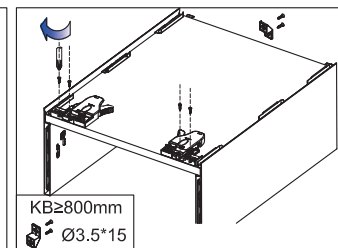
Drawer assembly



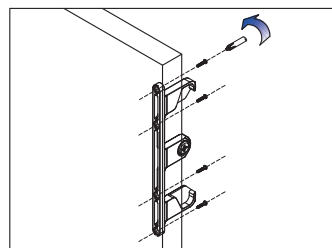
Bottom assembly



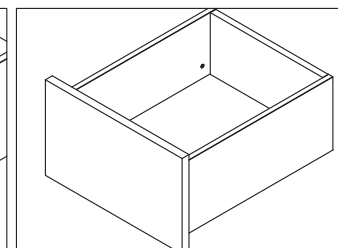
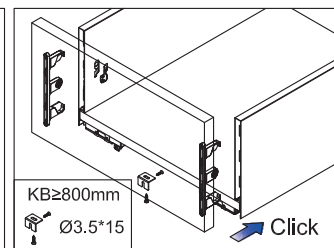
Locking Brackets assembly



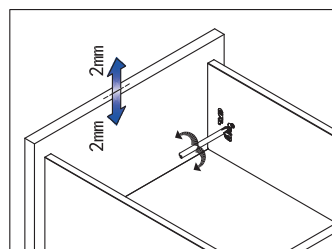
Back assembly



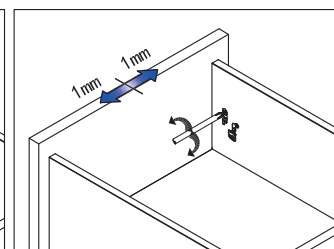
Front assembly



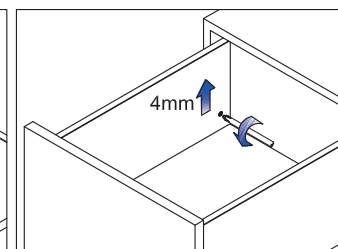
Adjustment



Up&down adjustment

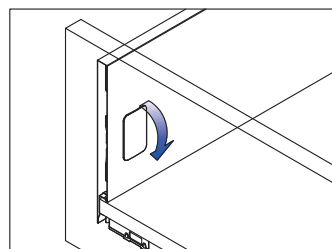


Left&right adjustment

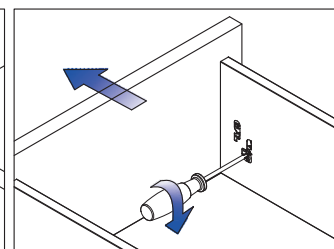


Front slope angle adjustment

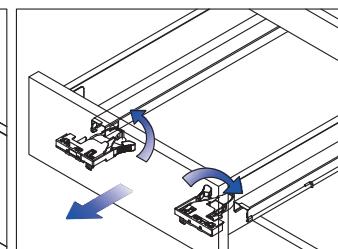
Removal



Tip up the cover and pull out



Removal drawer front



Removal drawer